

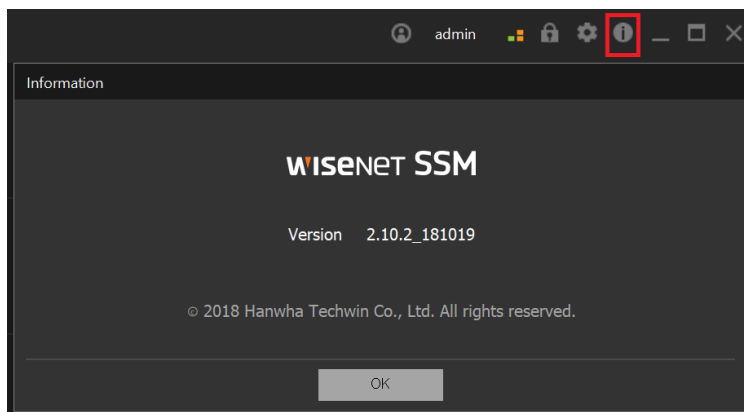
# SSM Release Notes

## Changes on v2.10.2\_Hotfix (2018-11-20)

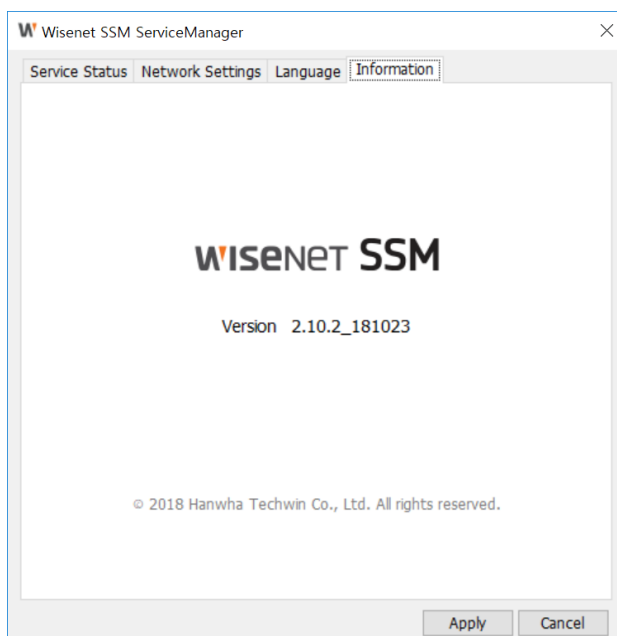
---

### CAUTION

- This hotfix version support only v.2.10.2, please check s/w version of Core Server & Console Client.
- Check client version on the Console Client information



- Check server version on the SSM Service manager



# BUG FIXES

- Core Serer
  - [VoC] Fixed an issue that device name is displayed abnormally in none Latin character
  - [VoC] Fixed an issue that alarm or relay is counted as channel license
  - Fixed an issue that mac address is displayed abnormally in ONVIF camera, especially on SeeEyes.
  - Fixed an issue that MediaServer is crashed when ONVIF camera, especially on SeeEyes, does not support adding new profile..
  - Fixed an issue that talk is not finished when video loss is occurred while talking
  - [VoC] Fixed an issue that video is not displayed when SSL is enabled on NVR
  - [VoC] Fixed an issue that video is lagged on SPD-1660
  - [VoC] Fixed an issue that playback performance is reduced on Windows Server OS
  - [VoC] Fixed an issue that recording performance is reduced on iSCSI storage
  - [VoC] Fixed an issue that device tree is displayed abnormally when NVR is disconnected.
  - Couldn't change the video profile of the last channel on the DVR which support multiple video profile. Fixed.
  - RTSP PLAY command does not work normally, when the s/w try to use RTSP Service. Fixed.
- Console Client
  - [VoC] Fixed an issue that all tiles are not updated properly after layout is changed.
  - [VoC] Couldn't start the program on the some PCs.

# SSM Release Notes

## Changes on v2.10.2 (2018-10-24)

---

### NEW FEATURES

- N/A

### IMPROVEMENTS

- Changed Service Manager 32-bit to 64-bit architecture.
- Core Server
  - When only one drive(C drive) is exist on the system, Event logs will be recorded in the system drive. Otherwise, it will be stored in the D drive.
- Console Client
  - Improved 15M video display performance.
  - Updated S/W Certificate.

### NEW DEVICE SUPPORT

- N/A

### BUG FIXES

- Core Serer
  - Didn't send reconnection event to clients when Media Server was restarted. Fixed.
  - Couldn't request media to camera sometimes when clients request audio-broadcasting command repeatedly. Fixed.
  - Covert and multicast settings were initialized when Media Server was restarted. Fixed.
  - Resolved some upgrade problems regarding upgrade from 2.00.2 to 2.10.1.
  - Couldn't import/export configuration of server after system upgrade. Fixed.
  - When a server has multiple IP addresses, sometimes server clustering had been failed. Fixed.
- Console Client
  - Corrected Multi-language translation with some phrases.
  - Crash when user set event bar option repeatedly. Fixed.

- Couldn't display event notification from external device normally on the event window. Fixed.
- Couldn't terminate the client sometimes while schedule-backup running. Fixed.
- SSM-VM
  - Crash when user set Tile-Spot option as 16:9 tile pattern.
  - Did not update on the display even if user change OSD Map tile size.

## KNOWN ISSUES

- When update SSM Core Server from v2.00.2 to 2.10.2, Email and SSL settings will be initialized.
- If older systems is running on clustering, you must stop SSM Core Server services of all clustering servers before S/W upgrade.
- When export one-time schedule on DST-ON period, .sec export may not work normally. (will be fixed next version)

# SSM Release Notes

Changes on v2.10.1 (2018-09-21): Official Release from 2.10.0 Appliance version

---

## NEW FEATURES

- Supported migration from SSM 2.00.2 / 2.10.0 to 2.10.1
  - 2.10.0 → 2.10.1 will be updated during installation automatically
  - 2.00.2 → 2.10.1 to migrate recording data in 2.00.1 Core Server, a separate migration tool is provided.
  - **Caution:** If older systems is running on clustering, you must stop SSM Core Server services of all clustering servers before update.
- Enhanced ONVIF device support
  - Dual profile video recording for ONVIF cameras; If you register ONVIF cameras on Core Server, it would create a new low video profile automatically.(H264, 640x360, 24fps, 350Kbps, Low4SSM)
  - Supported ONVIF Audio backchannel.
- SSM-VM
  - Supported Active/Active Fail Over
  - Direct Wall Display; you can now set to video sequence action from Console Client to VM
  - New graphics pipeline: Migration from DirectX9 to DirectX11
  - Supported Max 132 video simultaneous monitoring
  - Added 72/81/100/121/132 video display tile patterns

## IMPROVEMENTS

- Improved Wisenet ACS integration
  - Supported WACS event types
- Core Server
  - Improved CPU usage of Media Server when it streams to clients.
- Console Client
  - Improved some Icons design; Playback Sync, MIC
  - Added "Show IP" option in OSD settings.
  - Enhanced device manual registration; now you can register multiple devices at a time with IP range
  - Added Mic icon on the video display when a user sends audio to the device.

- Improved Fish-eye PTZ control; adjust speed value on the control when zooming in/out in XNF-8010, PNF-9010 dewarping mode.
- Removed ID/PW field on “Scheduled export” setting page. It does not need anymore.
- SSM-VM
  - Simplified CUDA Decoder option; users just enable or disable CUDA Decoder if it can be used on the PC
  - Changed High/Low profile setting in the same way as Console Client

## NEW DEVICE SUPPORT

- Core Server/Console Client
  - IP Camera: PNM-9320VQP

## BUG FIXES

- Core Serer
  - Fixed a problem regarding audio transmission and broadcasting.
  - Resolved an issue with the ARB (Auto recovery backup) function with the disconnected camera; Despite ARB, an empty timeline still exists. Fixed.
  - Video playback was stopped occasionally when recording timeline had no-record sections. Fixed.
- Console Client
  - Corrected some UI problem on 4K Monitor display with DPI settings.
  - Corrected Memory and handle leaks when open and close a window repeatedly. It could cause to reduce s/w performance and crash.
  - Sometimes crash when dewarping multiple SNF-8010 cameras. Fixed
  - Audio data were cut when sending audio to devices using an audio file. Fixed
  - When Intel Quick Sync Decoder option was enabled, and the user tries to see “Original Size” of the selected video via the context menu, S/W crashed. Fixed
  - Device name was not displayed on Export video window when user set to “Name set by the devices” as “true”. Fixed
  - Crashed rarely when user search timeline on “Advanced Search” window. Fixed
  - When the server was disconnected and reconnected, last video image was displayed on the screen permanently not to request new media to the server.
  - Was running slow on a specific PC. (CPU/MEMORY/NETWORK resource check routine could cause thread/handle leaks on specific PC.). Fixed.

## KNOWN ISSUES

- When update SSM Core Server from v2.00.2 to 2.10.1, Email settings will be initialized.
- If older systems is running on clustering, you must stop SSM Core Server services of all clustering servers before S/W upgrade.
- When export one-time schedule on DST-ON period, .sec export may not work normally. (will be fixed next version)

# SSM Release Notes

## Changes on v2.10.0 (2018-07-24): PRP-4000/5000 PC NVR ONLY

---

### NEW FEATURES

- Active/Active Fail Over
  - Active/Active Failover; Now supported High-availability clusters. HA Clustering remedies this situation by detecting hardware/software/network faults
- Event filtering by device
  - In the Configuration window > Event > Management > Client Event of Console Client, you can set to filter and receive only the certain events by the device.
- Settings for set alarm input/alarm output
  - In the Configuration window > device tree of Console Client, now the user must register/unregister alarm input or alarm output object to manage it.
- Settings for the initial password of Core Server
  - After installing Core Server, then the user needs to set an initial password for the Admin when you log first into Core Server
- Dual profile video recording
  - When you record camera videos on Core Server, you can set whether to record low-resolution videos and high-resolution videos at the same time.
  - If you registered cameras using SUNAPI protocol, Core Server can low video profile automatically. (H264, 640x360, 24fps, 350Kbps, Low4SSM)
- IP based license
  - When you register a multi-channel supported camera or an encoder, only 1 channel license is required even if it streams multiple video channels. (within Max.128 channels)
- Core Server
  - New Media Server; Core Server merged Media Gateway and Recording Server into Media Server, Now it can provide better performance and recording capacity.
- Console Client
  - New graphics pipeline: Migration from DirectX9 to DirectX11
  - Supported Intel Quick Sync video decoding (Max 128ch : H264 640\*360\*24fps, Max 36ch : H264 1920\*1080\*30fps)
  - Added status icon to view CPU/Memory/Network usage
  - Added a setting in Screen option; Only I-frames are played when decoding or rendering loads occur



- Added “Auto Layout mode”; Clicking “Auto” button in Pattern menu will automatically set the screen split of the video window
- Added Auto-start option on Windows startup
- Added Scheduled export; You can automatically export the recorded videos of the previous date stored in Core Server/NVR/DVR every day at a specified time on the next date.

## IMPROVEMENTS

- Core Server
  - Supported Max 2,048 channels/domain, 128 channels/server in case of using server storage
  - Supported Max 28 server clustering
  - Supported up to 35 simultaneous connection per server
  - Supported 128Channel simultaneous playback.
  - Supported High/Low dual profile recording/playback
  - Added event occurrence overload alarm, When Core Server receive too many events from devices, then the server will not send low priority events to Console Clients logged in.
  - Improved restoration procedure when DB and configuration crashed
- Console Client
  - Supported Max 132 video simultaneous monitoring
  - Added 72/81/100/121/132 video display tile patterns.
  - Improved restoration procedure when configuration crashed
  - Supported multiple devices selection for live monitoring; users can now drag and drop multiple devices into video pattern tiles at a time.
  - Simplified CUDA Decoder option; users just enable or disable CUDA Decoder if it can be used on the PC
- Dashboard (in Client or web browser)
  - Enhanced log backup by date
  - Supported RAID Status monitoring

## NEW DEVICE SUPPORT

- Core Server/Console Client
  - IP Encoder: SPE-1600/410

## BUG FIXES

- See 2.10.1 release note

## KNOWN ISSUES

- N/A

# SSM Release Notes

## Changes on v2.00.2 (2018-03-28) : Official Release

---

### NEW FEATURES

- N/A.

### IMPROVEMENTS

- Core Server
  - Improved RTSP Server performance and stability. (For SPD-1660R Video Sequence)
- Console Client
  - Added a split bar on Layout setting page, Map setting page in Configuration. Now you can move a bar right to view more of the data in the left window.
- SSM-VM
  - Improved SPD-1660R video sequence performance

### NEW DEVICE SUPPORT

- N/A

### BUG FIXES

- SSM Core Server
  - Corrected handle leaks of RTSP Server in MG
  - Corrected handle leaks of MG when SVP devices are connected.
  - Fixed a problem that could cause abnormal MG termination while Sequence monitoring of registered devices. (SVNP/SUNAPI protocol for the camera, SVP/SUNAPI protocol for NVR/DVR could cause the problem)
  - RS Log Manager Service has sometimes terminated abnormally. Fixed.
  - The user can not remove registered cameras after reset settings to default. Fixed
  - [Service Manager] Service Start/Stop command didn't work sometimes. Fixed
- Console Client
  - Device tree UI sometimes did not update status when the user removes a device from the Core Server. Fixed

- Recording Server was terminated abnormally by the client when the user requests 2days period timeline. Fixed
- When you try to change the video profile of multiple cameras on the Configuration window, and one of them have no profile information, it sometimes could cause abnormal termination. Fixed
- If user set “Name set by the device” as checked, Device tree UI didn’t update on the Monitoring window. Fixed
- After the user logged in as “User Group”, when trying to change layout settings, Tree UI sometimes couldn’t display camera list. Fixed
- SSM-VM
  - Corrected memory leaks of VMG
  - Fixed a problem that could cause abnormal VMM termination when user set tile spot on the 16:9 monitor mode.

## KNOWN ISSUES

- If network connection between cameras and Core Server, it could cause abnormal termination of Core Server (SUNAPI Camera, in rare cases)

- 

# SSM Release Notes

## Changes on v2.00.1 (2018-01-27): Official Release

---

### NEW FEATURES

- Auto-discovered devices notification on Real-time Events Window
- IP assignments for multiple devices
  - You can now change the IP addresses of multiple devices at a time in range.
- Live preview image of the registered SUNAPI devices.
- Dashboard for the monitoring system.
  - You can now monitor the status of the SSM Core Server system with SSM Console client or a web browser.

### IMPROVEMENTS

- Enhanced user interface on Video display screen.
  - Snapshot, Local recording, Digital zoom buttons on the live video tile.
  - UI animations when user moves video tiles with mouse input.

### NEW DEVICE SUPPORT

- SSM Core Server/Console Client
  - IP Camera: PNM-9080VQ
- SSM-VM
  - SPD-1660R

### BUG FIXES

- N/A

### KNOWN ISSUES

- N/A